

More information at
www.the-innovators.info

New dimensions in decentralized drive architecture

With the new ACOPOSmulti65m, B&R is expanding its ACOPOSmulti drive system product range to include a motor-integrated servo actuator with IP65 protection. The ACOPOSmulti has always been extremely modular, and it was the next logical step to merge inverters with the motor to create servo actuators that can deliver power directly where it is needed. Configurable

modules thus become easy-to-connect mechatronic units. This not only saves space in the control cabinet, but also saves costs for logistics, warehousing and commissioning.

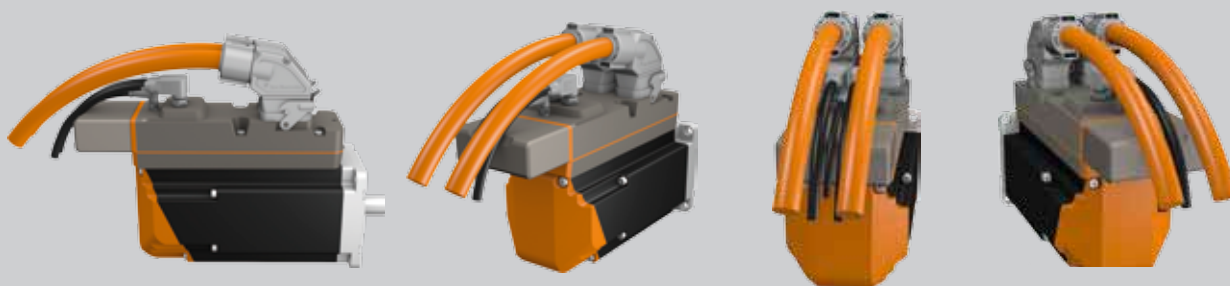
This new system unites all of the important components such as the motor, positioning sensor (encoder), precision gearbox and servo drive into

a very compact unit. Thanks to the simple electrical connection, the ACOPOSmulti65m supports the implementation of modular machine concepts, thus making it possible to efficiently design optimized manufacturing strategies. "With the new servo actuator, we are continuing on the path to decentralized motion control," explains Alois Holzleitner, Business Manager of

***i* Highlights**

- ▶ The servo actuator is available in three sizes ranging from 1.8 to 10.5 Nm
- ▶ Can be delivered with or without an add-on gearbox
- ▶ Seamless integration in the ACOPOSmulti drive system
- ▶ Reduced wiring
- ▶ Integrated safety technology (STO, SS1 safety functions)
- ▶ Additional safety functions (STO, SOS, SS1, SS2, SLS, SMS, SLI and SDI) are available as an option

The ACOPOSmulti65m with integrated servo motor impresses with its compact design



Motion at B&R. "We now offer the entire drive spectrum – from variable frequency drives and multi-axis servo drives to decentralized drive solutions – all from a single source."

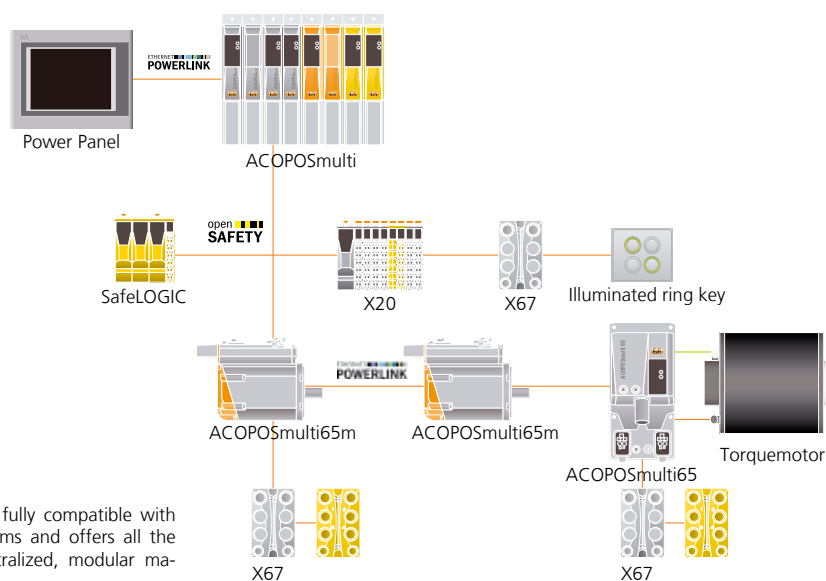
By combining the latest IGBT technology and optimized motor types, users profit from the resulting maximum performance. With three different sizes, the servo actuators cover the entire spectrum, with a torque range of 1.8 to 10.5 Nm and

a power range of 500 W to 2 kW. For applications that demand more power, an optional fan assembly can be retrofitted for a performance boost of up to 100%.

100% compatibility with B&R drive systems

The ACOPOSmulti65m is fully compatible with the entire ACOPOS drive series. As a result, it is possible to utilize all of the tools and features available in Automa-

tion Studio as well as applications created therein. With regard to topology, the new servo actuator can be employed in either a line or tree structure. In addition, it comes equipped with STO (Safe Torque Off) and SS1 safety functions in accordance with SIL 3 or PL. Additional safety functions such as SLS, SOS, SDI, SLP and many more can be used in combination with openSAFETY and are standard features of the ACOPOSmulti65m model with Safe Motion Control. ■



The ACOPOSmulti65m is fully compatible with existing B&R drive systems and offers all the possibilities of a decentralized, modular machine architecture.